

# Alare



Owner's manual

Remiga 2  
loudspeaker system



Dear Customer,

We would like to thank you for choosing a pair of Alare speakers. Before connecting them to the amplifier and in order to reach the best result, please read this handbook. Remiga 2 loudspeakers are designed to immediately meet our customers' highest expectations. In case of doubt, further information about installation and listening room needs can be asked your dealer technical staff or directly at the mail address [info@alare-labs.com](mailto:info@alare-labs.com).

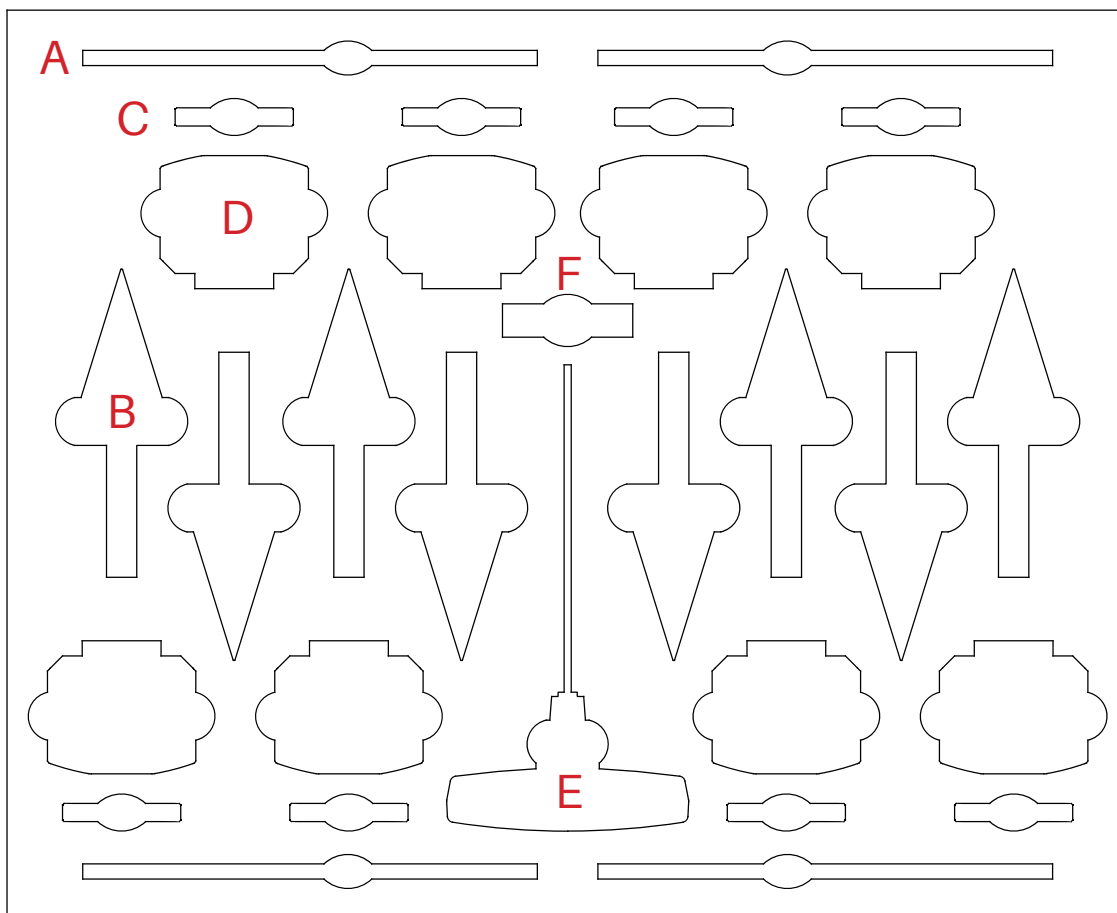
The logo for Alare, featuring the word "Alare" in a serif font with a decorative flourish underneath.

Alare is a trademark of Audia snc - Italy

## Accessories

Accessory box (one box each loudspeakers pair) contains following items:

- A) n. 4 jumpers for single wiring connection.
- B) n. 8 steel leveling spikes.
- C) n. 8 steel floor protection discs.
- D) n. 8 steel tightening knobs.
- E) n. 1 T shaped Allen wrench.
- F) n. 1 bubble level.
- n. 1 gloves pair (not shown).
- this manual.



## Warranty

Alare warrants materials, workmanship and proper functioning for a period of three years. The Italian warranty is valid from the purchase date shown on the receipt and only in Italy. Unauthorized dismantling of the product will render this warranty void. Alare reserves the right to make changes in design and improvements upon its products without necessarily assuming an obligation to retrofit such changes upon previously manufactured models. Alare shall in no event be obligated for any incidental or consequential damages as a result of any defect or any warranty claim, whether expressed or implied. Any replacement of parts not covered by the warranty will be charged to the customer. Any speaker requiring repairs must be taken to the retailer in its original packaging for delivery to our offices or authorized service center with a description of the defect. If shipping is required, such costs are charged to the client. For all foreign markets, the Alare local distributor is responsible for establishing any and all rules governing warranty in accordance with the rules and regulations that apply in each country. This includes length of warranty, location where repairs may be effected, costs, if any, and conditions pertinent to fulfilling the conditions of warranty.

## Safety informations

- Use one of the connection diagrams contained in this instruction manual. We strongly advice against connecting two or more loudspeakers in parallel. This can damage your amplifier.
- Avoid staying near the loudspeakers while the audio system is operating at high volume. This can cause permanent damage to your hearing.
- The speakers generate an electromagnetic field that is harmless to humans and pets, but can compromise the proper functionality of some electronic equipment when placed in close proximity.
- Do not place connection cables in close proximity to electrical power cables. This can cause humming noise.
- Remiga 2 loudspeaker system is intended for household use. They must not be used for high volume and continuous sound distribution as sound reinforcement. In this case, signal intensity is not compatible with correct operation of the system.

## Unpacking

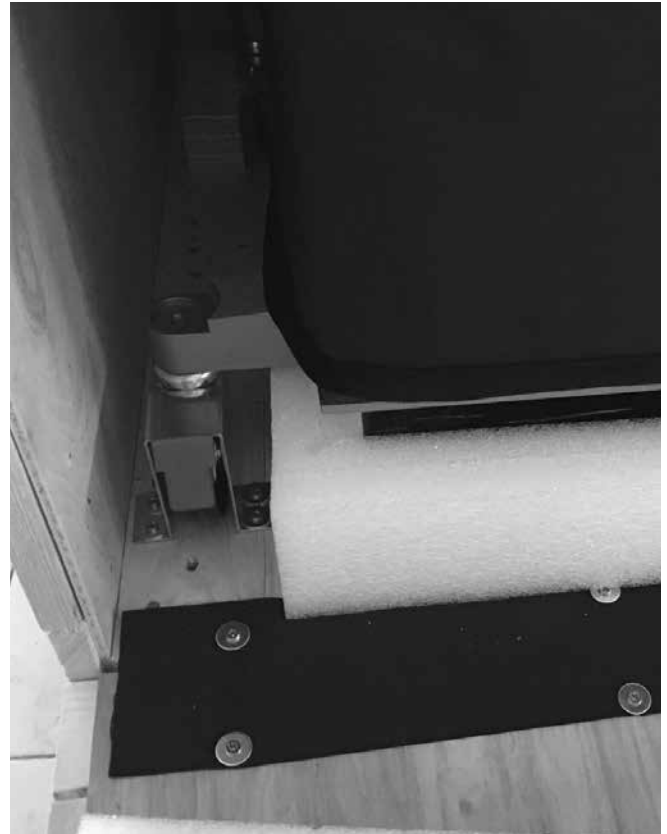
- Due to package weight, it's advisable to open the packaging as close to the final location as possible.
- Do not insert any blade, just remove clamps by hand after lock screws are removed.
- Do not wear metal accessories (as watches, rings) in order to avoid scratching loudspeaker finishes. The same care must be taken in order to protect the loudspeaker from any metal elements present on the clothes you are wearing (as rivets, zippers or buttons).

Instructions for first unpacking are indicated outside the wooden crating.

We show them again for future packing and unpacking operations.



Remove wooden top and top foam pad. Locate front panel and open it. Two or more people needed.



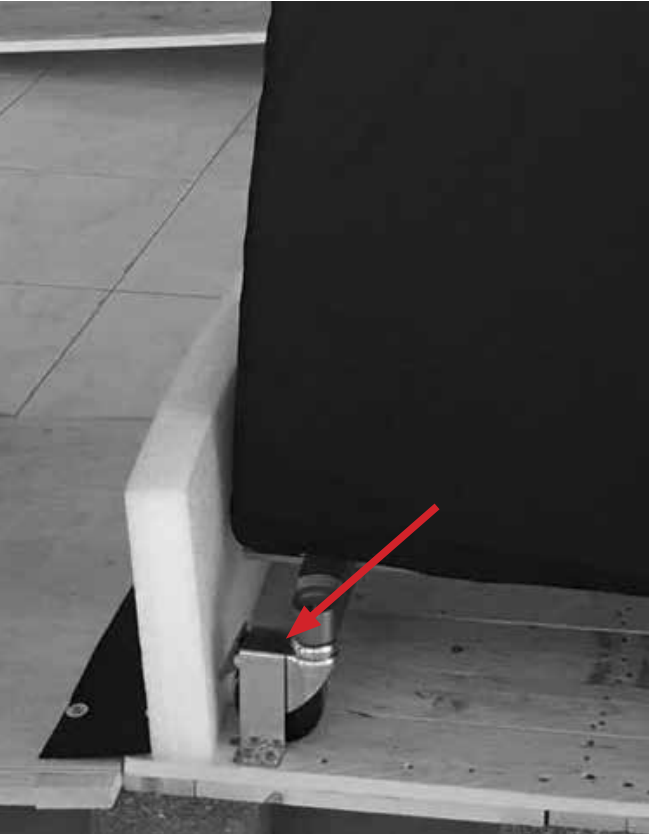
Front panel is joined to crating by a nylon strap. Attention, other wooden panels are free when clamps are removed.



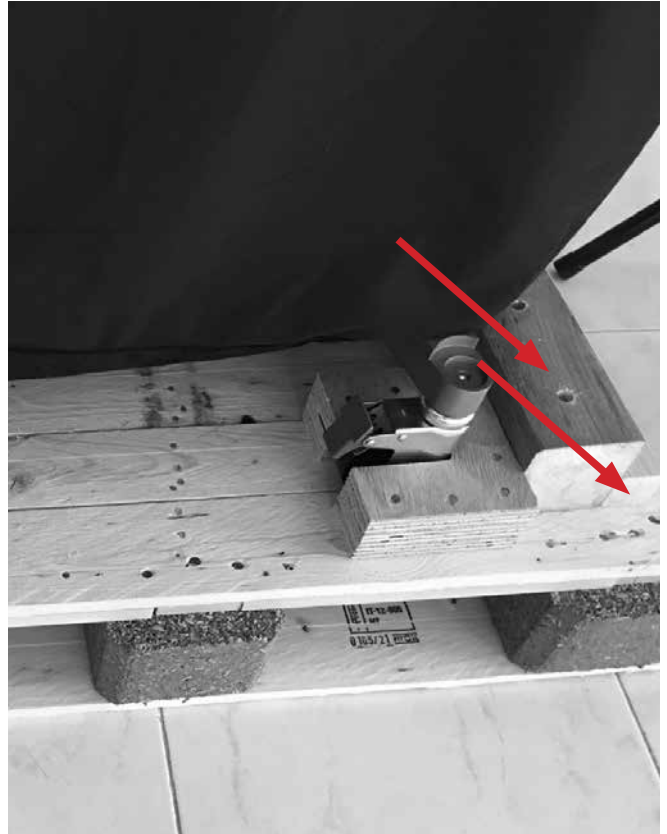
Remove accessories box and its foam protection.



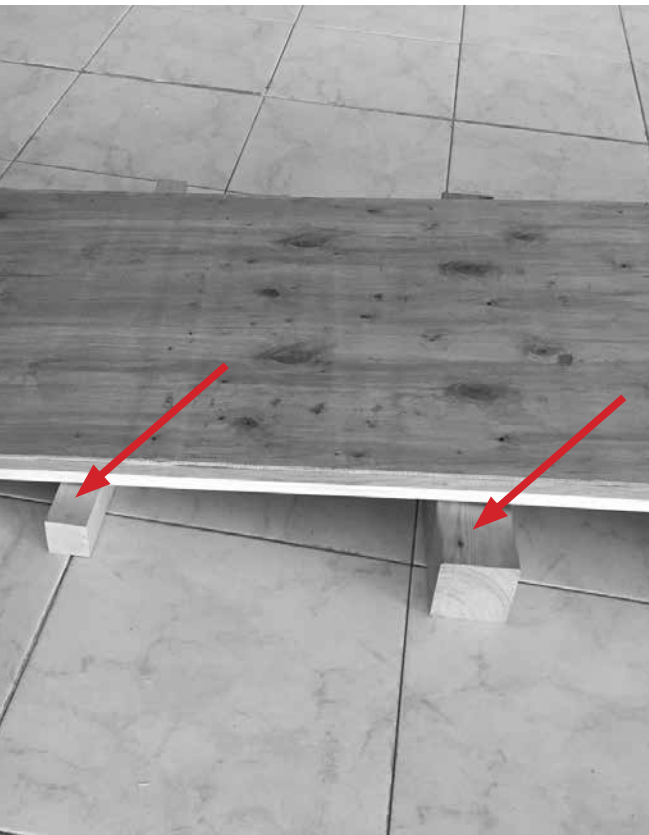
Remove side and rear panels and foam pads. Attention, wooden panels are free when clamps are removed.



Remove metal clamps from front wheels. Don't release wheels brakes off.



Unscrew the four wooden blocks behind rear wheels.



Put wooden blocks under inclined panel as in picture in order to avoid base bending.



Release all brakes off and carefully move speaker down the crating. Be careful on edge step. Two or more people needed.



When in place, activate brakes on all wheels and tilt speaker pivoting it on a side wheel pair. Two or more people needed.



Unscrew the floating pair of wheels and substitute them with spikes at maximum thread length. Repeat this procedure on the other side.



Once speaker is in place, level it acting on spikes with provided T Allen wrench.



Make stiff speaker standing inserting knobs and tightening them. It is always possible to tune leveling without removing knob, just loosening it.



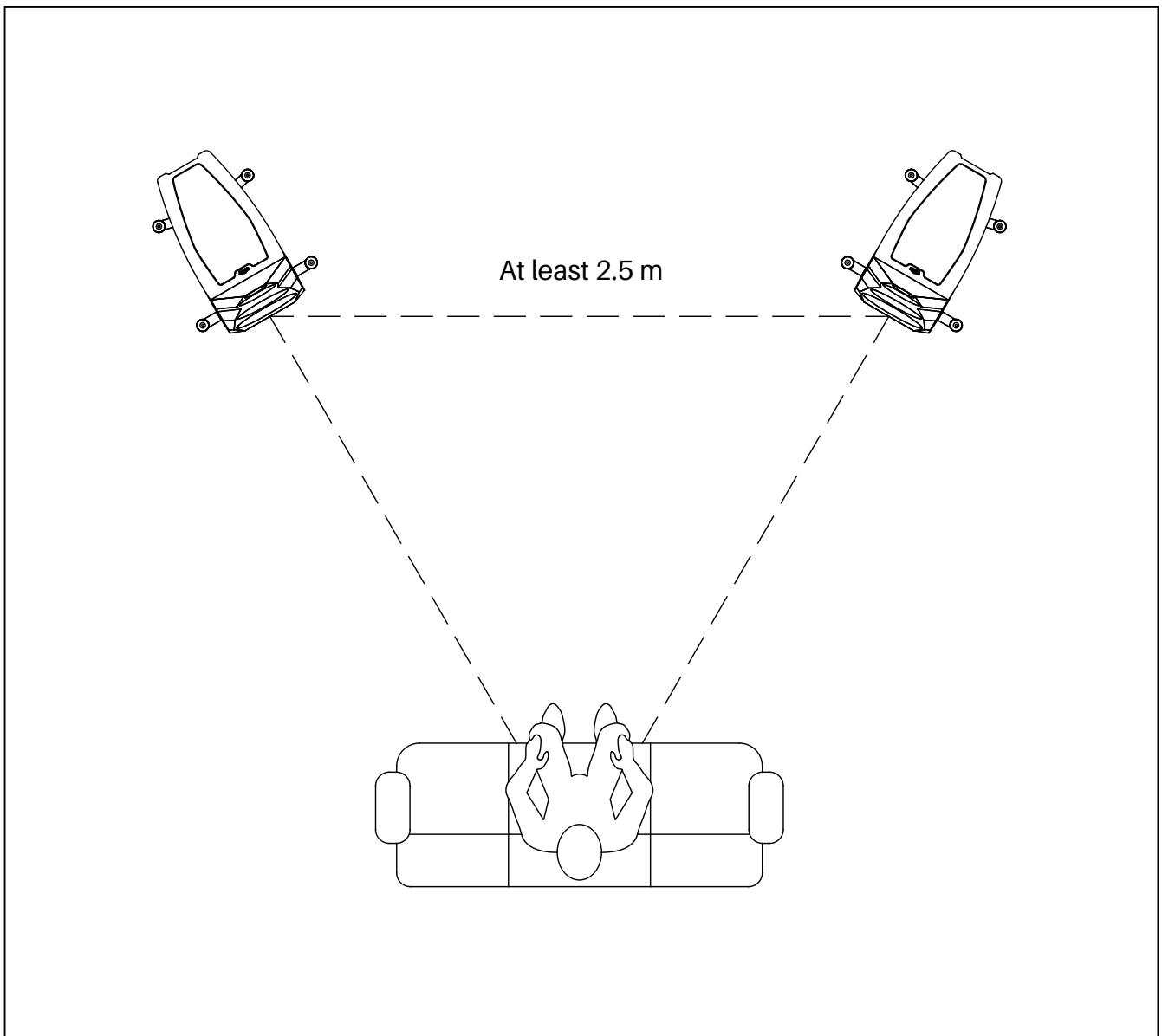
## Positioning

Loudspeakers positioning can affect the entire audio system performance in different ways. Rooms with irregular shape can improve the bass response since they limit the formation of standing waves. From this point of view, a cube shaped room is the worse case for poor bass frequencies performances.

The presence of carpets and curtains positively affect the acoustics of the environment, contributing to the absorption of the first reflections and the lowering the total time of reverberation.

There are no fixed and universally applicable rules for every environment. Nevertheless, a good approach is to start by using the equilateral triangle rule, that is that speakers and listener are positioned in proximity of the vertices of the triangle. Loudspeakers should converge toward the listening position in order to reach the best stereophonic configuration. This is to be considered just the starting point, little adjustments of the loudspeakers tilting angle can improve the focus of stereophonic image in different listening rooms.

Anyway, it is recommended to position the two loudspeakers away from the corners of the room, and at a distance of at least 1.5 m from the back wall and at least 2.5 meters apart from each other. The listening point should be at a height between 0.9 and 1.1 meters off the ground.



## Cleaning and maintenance

The loudspeakers do not require any particular maintenance operations, just general periodic cleaning. In order to preserve the loudspeakers finish, cover them with the supplied cover, especially if the loudspeakers are not expected to be used for an extended period of time.

Do not use products like waxes or detergents to clean the wood parts, as these could stain or damage the finish of speaker. Do not use aggressive chemical products such as acetone, acids, abrasive agents, strong de-greasers or alcohol. It is recommended to use a soft brush to eliminate any dust that may have accumulated on the cabinet, the front panels, and the loudspeakers themselves, taking care not to damage the drivers membranes. Never try to remove metal grilles from midrange e tweeter drivers. It is recommended to use a slightly moistened soft cloth. We recommend positioning the loudspeakers away from heat sources or windows, above all during the summer months. Avoid exposing the loudspeakers to direct sunlight. These measures will help you to keep your loudspeakers perfectly for years to come.

## Connections

After the loudspeakers have been positioned, they can be connected. Refer to the illustrations below.

The loudspeaker connection terminals allow you to connect cables terminated with stripped cable, forks or banana plugs.

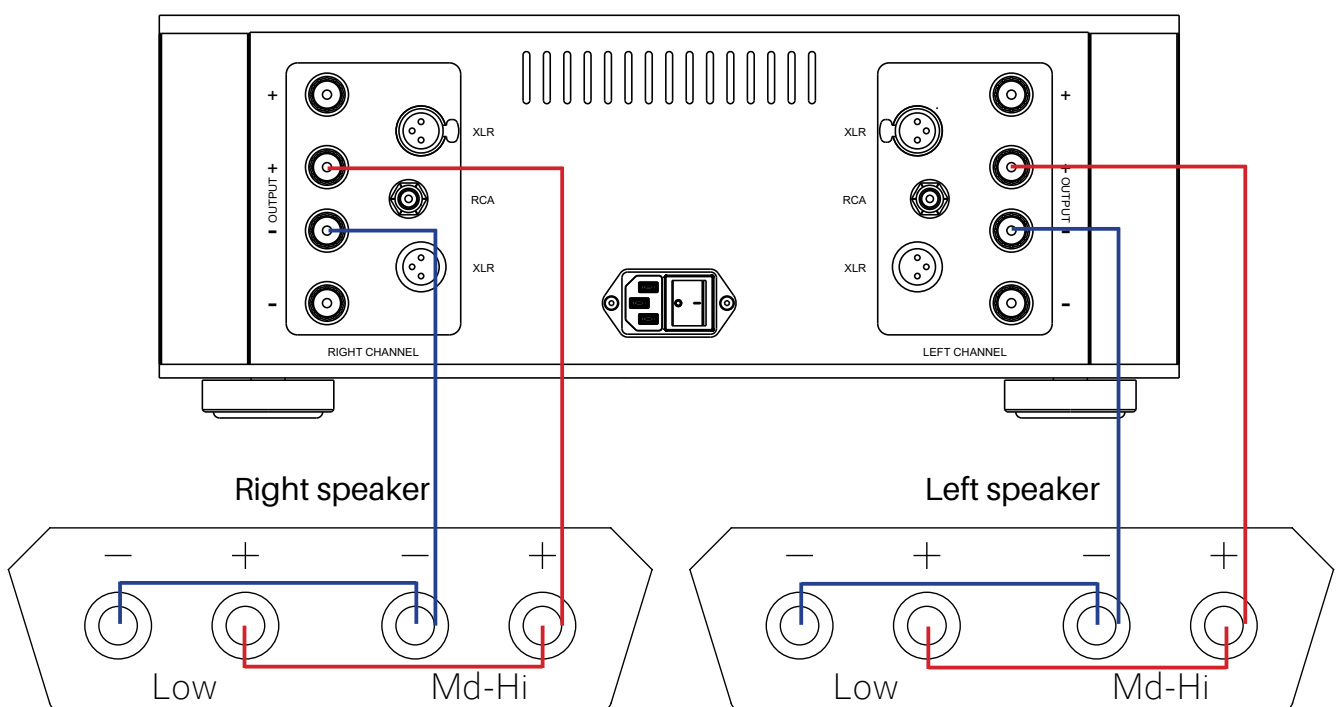
A supplied high quality jumpers set allows you single wiring connection.

If you choose bi-wiring connection, these jumpers have to be removed.

Proper tightening and periodic verification of the terminals will help to obtain and maintain optimal performance.

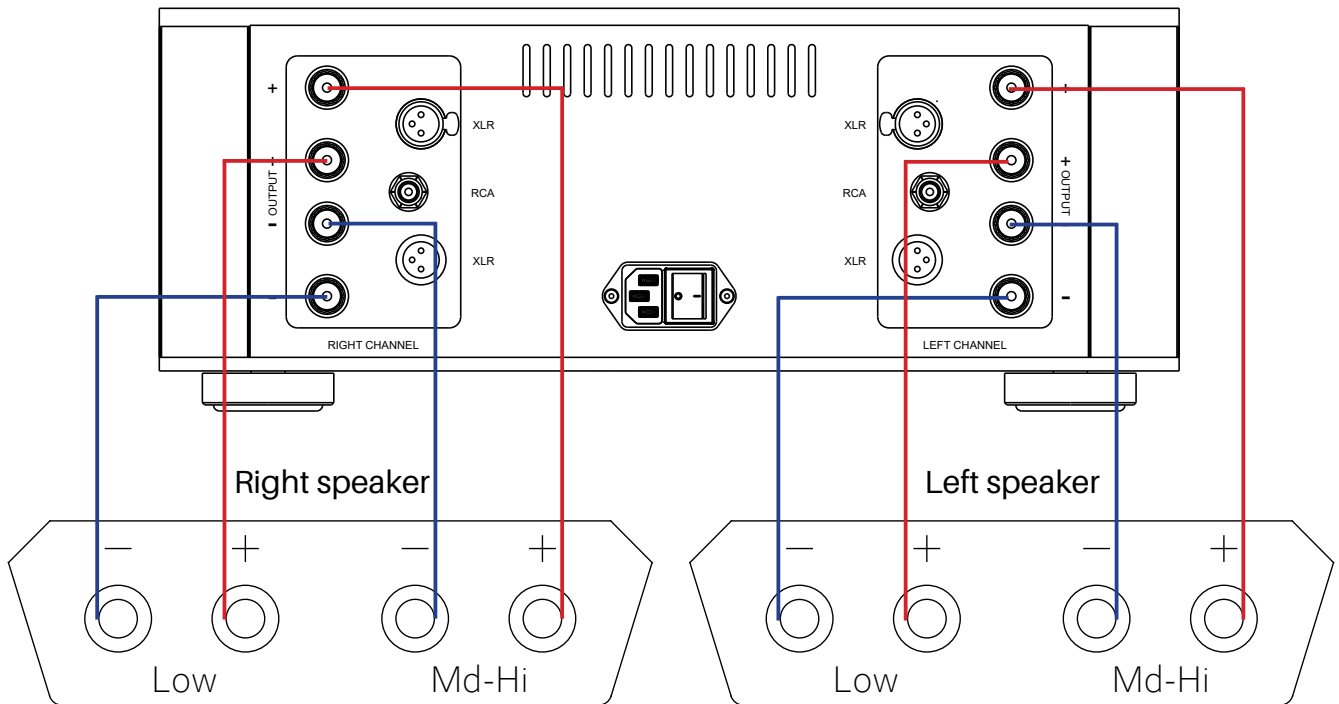
### Single wiring connection

It consists in driving loudspeakers with a single stereo amplifier, or with a pair of monophonic amplifiers, using only one bipolar power cable for each channel. Complete the connection as shown in the following illustration. Use the provided jumpers.



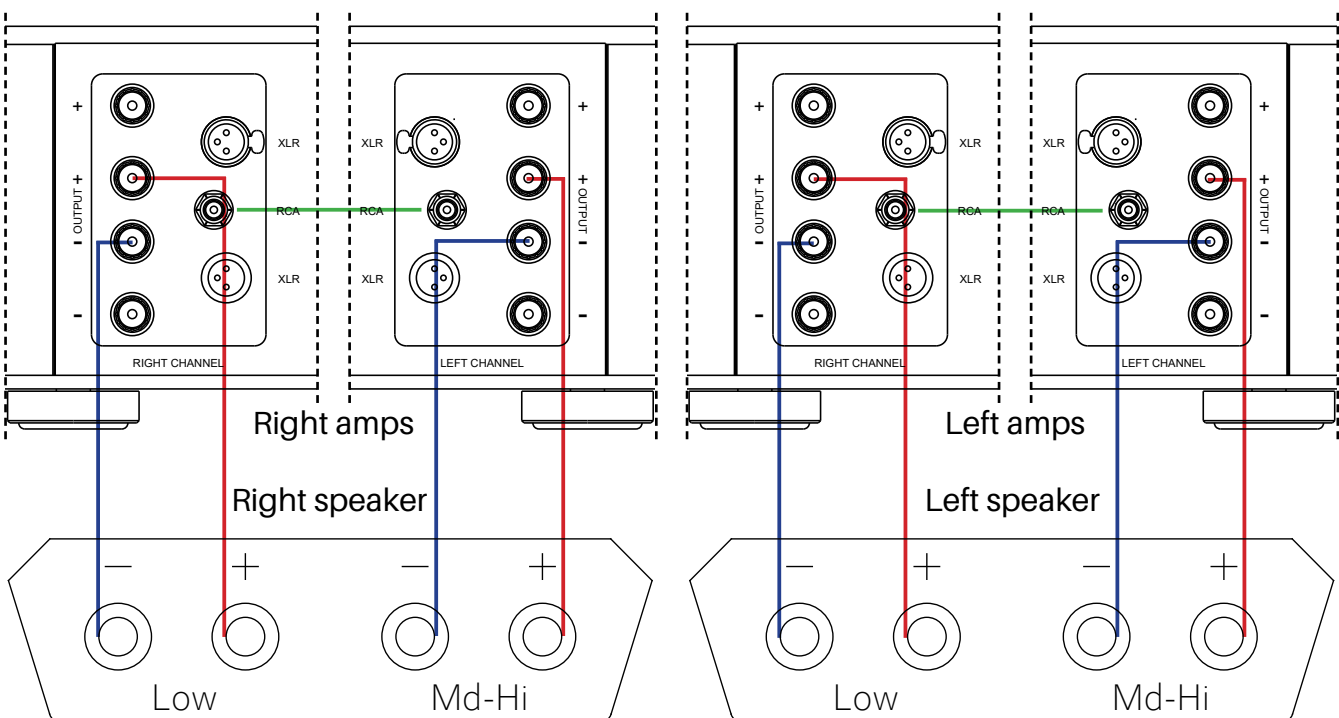
## Bi-wiring connection

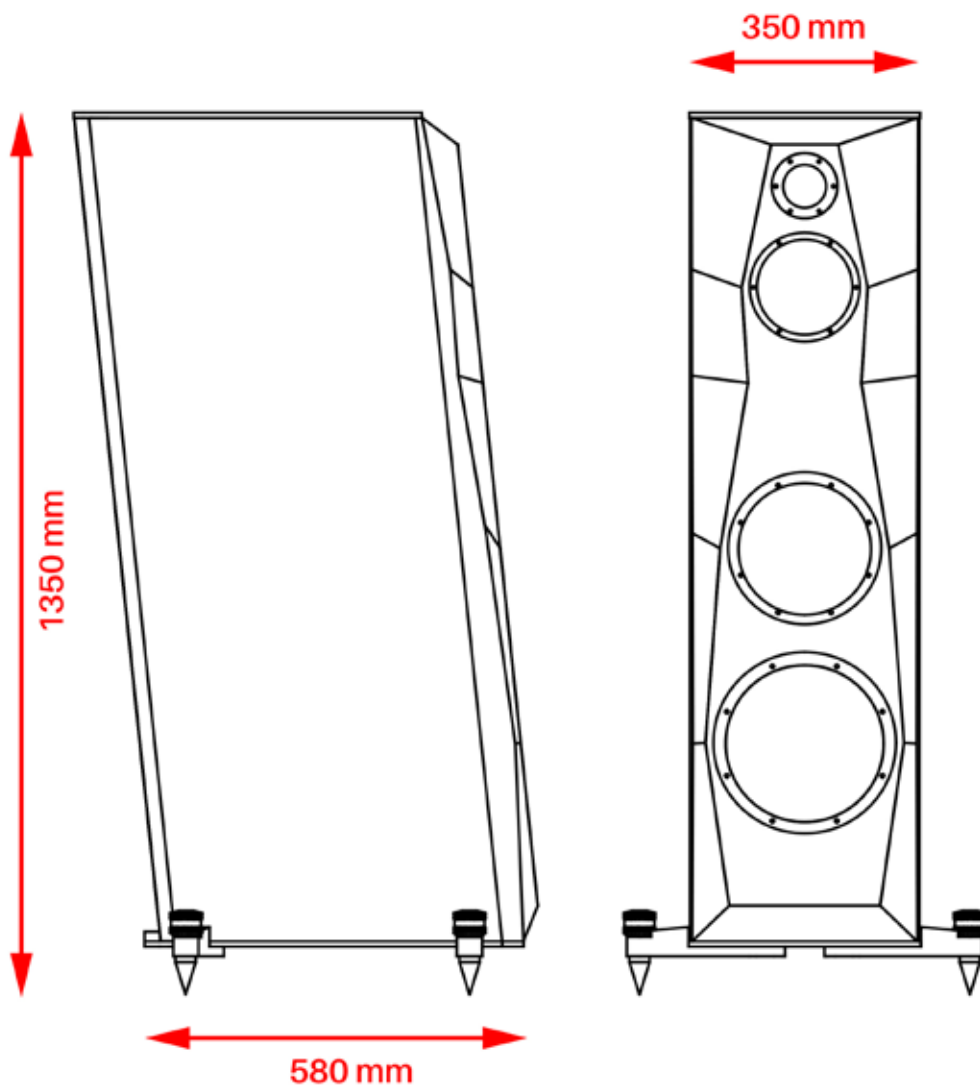
This scheme allows the bipolar power cables, to be connected to the "Low" sections and the "Md-Hi" sections of the loudspeakers, to be duplicated. It consists in driving the loudspeakers with a single stereo amplifier, or with a pair of monophonic amplifiers, using separate bipolar power cables for each input section of the loudspeaker. No jumper needed.



## Bi-amping connection

This scheme allows the amplifiers to be connected to the "Low" sections and the "Md-Hi" sections of the loudspeakers to be different. Loudspeakers are run with two distinct stereo amplifiers, or with two pairs of monophonic amplifiers, using separate bipolar power cables for each input section of the loudspeaker. No jumper needed. Input signal for right/left amplifiers pair is common.





## Technical data

*Sistem: three way floor standing speaker.*

*Bass loading: tapered transmission line.*

*Woofers: 1 x 10" (250mm), 1 x 8" (200 mm) carbon sandwich cone.*

*Midrange: 7" (170 mm) pure ceramic membrane.*

*Tweeter: 1.2" (30 mm) pure diamond membrane.*

*Crossover: silver plated solid copper point-to-point wiring.*

*Wiring: special silver plated copper.*

*Impedance: nominal 4 Ohm (minimum 3.3 Ohm).*

*Sensitivity: 86 dB (2.83V/1m one driven).*

*Frequency response: 32Hz - 30kHz (0 - 3dB).*

*Dimensions: 135 x 35 x 58 cm.*

*Weight: 120 kg (each, without crating).*



# Alare

Alare is a trademark of  
Audia snc  
Via Alfio Flores, 7  
00053 Civitavecchia  
(RM) - Italy  
[www.alare-labs.com](http://www.alare-labs.com)  
[info@alare-labs.com](mailto:info@alare-labs.com)

**Made in Italy**





